

INSTALLATION INSTRUCTIONS

LAST UPDATE 2025	VEHICLE TYPE GRENADIER STATION WAGON
---------------------	---

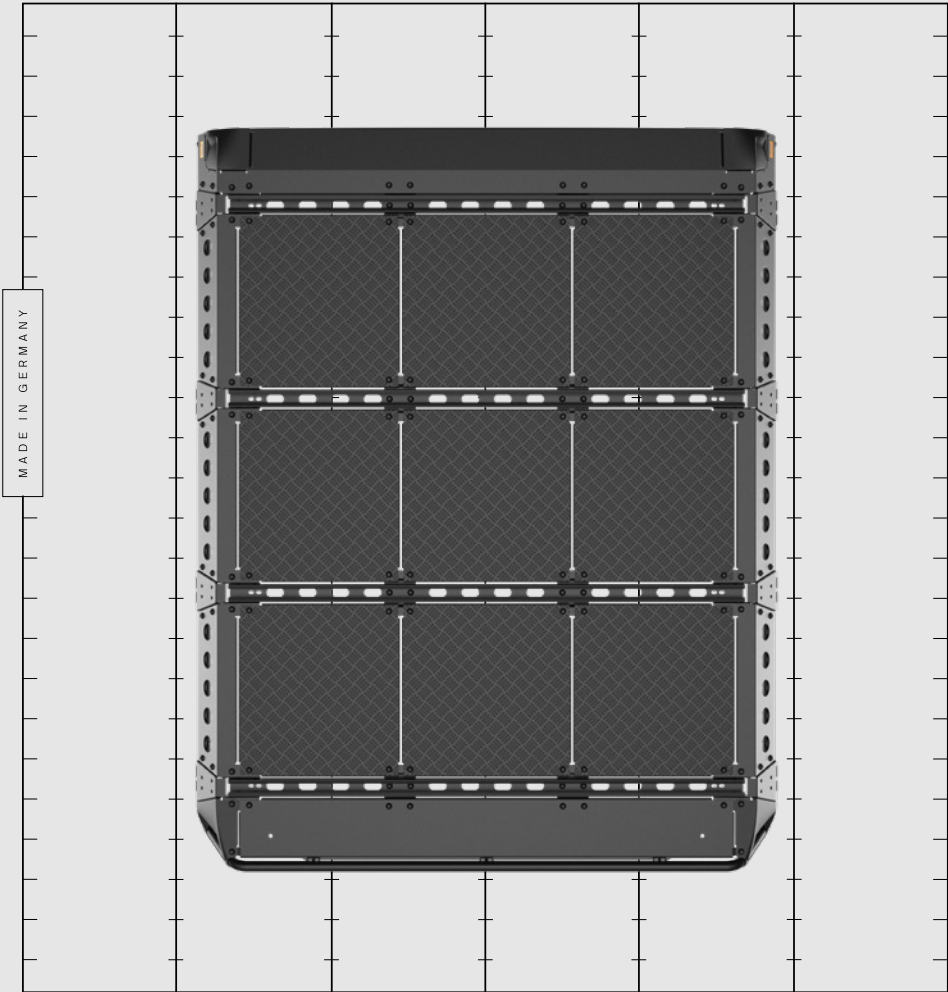


TABLE OF CONTENTS

1. General. 3

1.1 Safety instructions 3

1.2 Scope of delivery 4

2. Installation 7

1. GENERAL

Thank you for purchasing a LETECH quality product. Through state-of-the-art production facilities, constant checks and regulated processes, we ensure that only flawless products leave our production.

1.1 SAFETY INSTRUCTIONS

Work on the vehicle may only be carried out by trained specialists.

Work on the vehicle electrical system may only be carried out by specialists with appropriate electrical and electronic knowledge.

Before working on the vehicle electrical system, disconnect the battery.

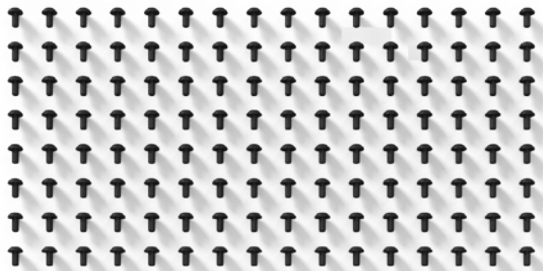
Use suitable hoists and tools when preparing and assembling the LETECH roof rack.

In general, the safety requirements of the respective workshop or country must be observed.

1.2 SCOPE OF DELIVERY

Pan head screw M8x16
(84x)

+ Scope of delivery item no. 11079
Pan head screw M8x16
(44x)



Closure plug
(2x)



Support end plate
(4x)
Only for installation without tread
plates (item no. 11079)



Flange bolt M8x16
(64x)



Flange bolt M8x25
(2x)



Flange nut M8
(4x)

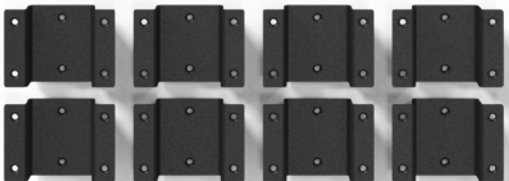


Flange bolt M8x12
(3x)

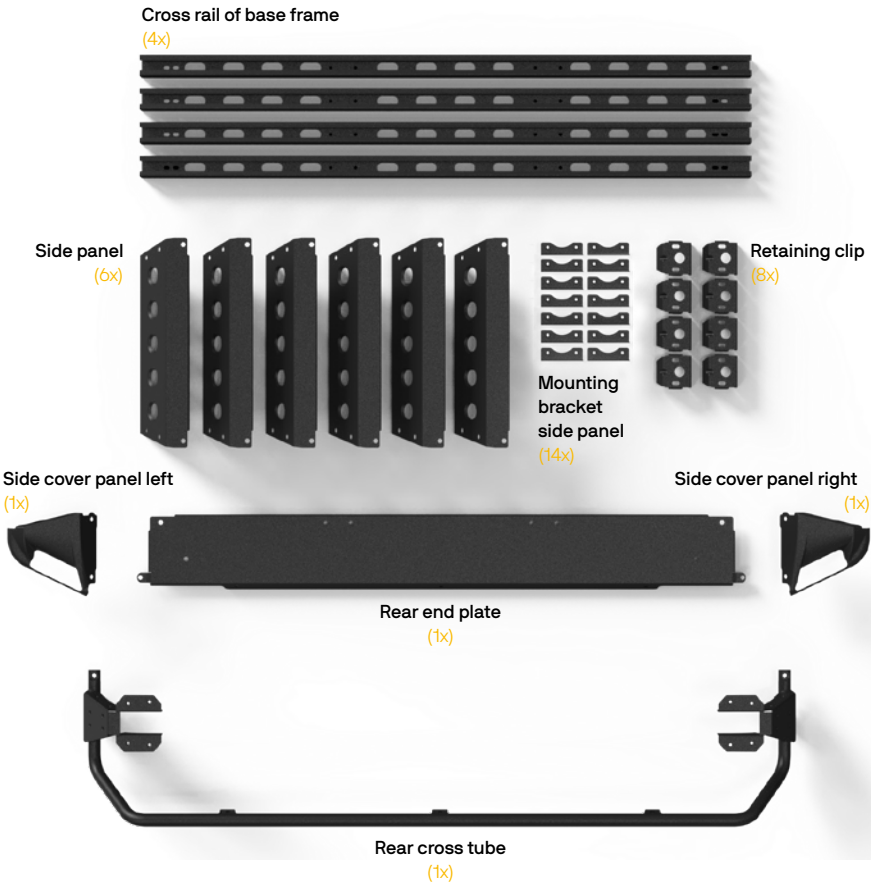


Mounting surface for center tread
plate
(8x)

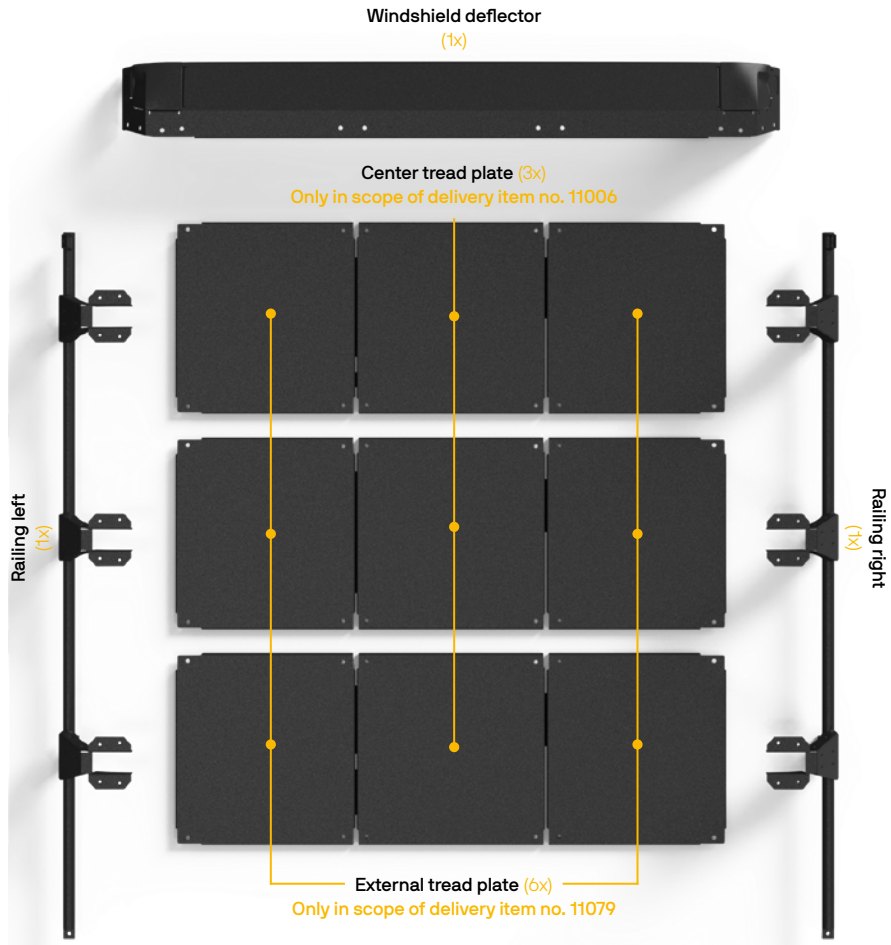
Only for installation without tread
plates (item no. 11079)



1.2 SCOPE OF DELIVERY



1.2 SCOPE OF DELIVERY

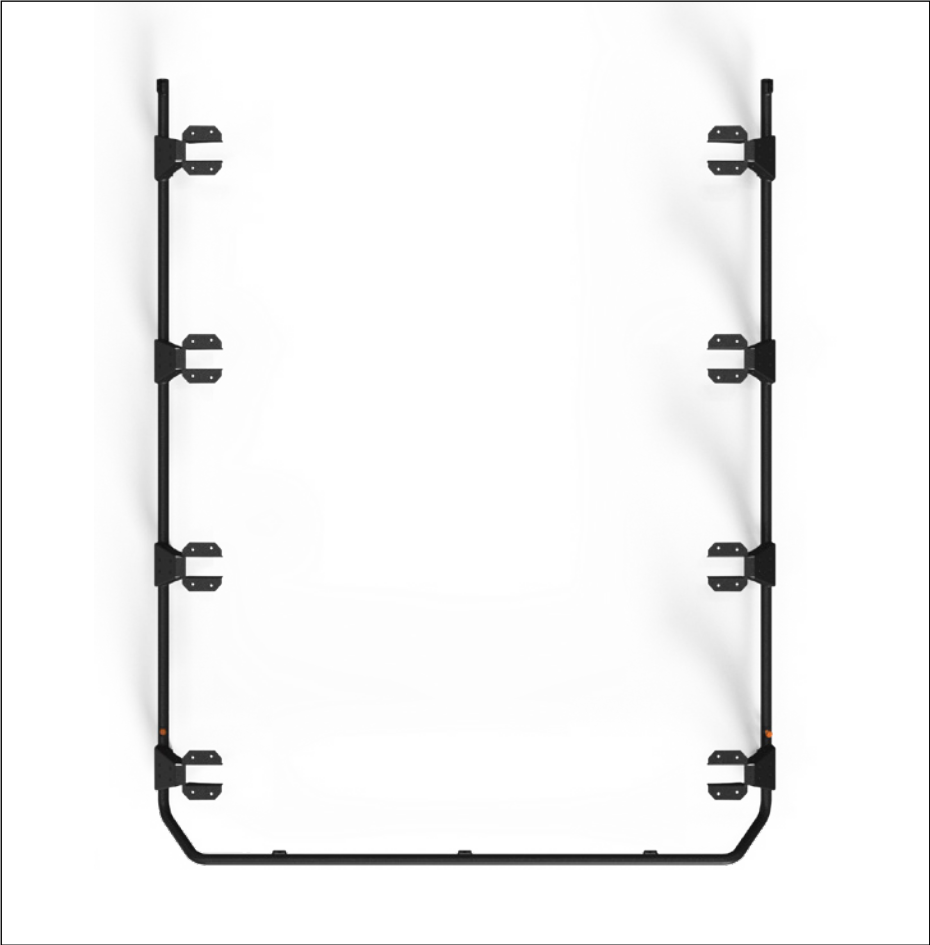


2. INSTALLATION



Flange nut M8 (2x)	Connect the left and right railing to the rear cross tube. Do not tighten the screws yet!
Flange bolt M8x25 (2x)	
Railing left (1x)	
Railing right (1x)	
Rear cross tube (1x)	

2. INSTALLATION

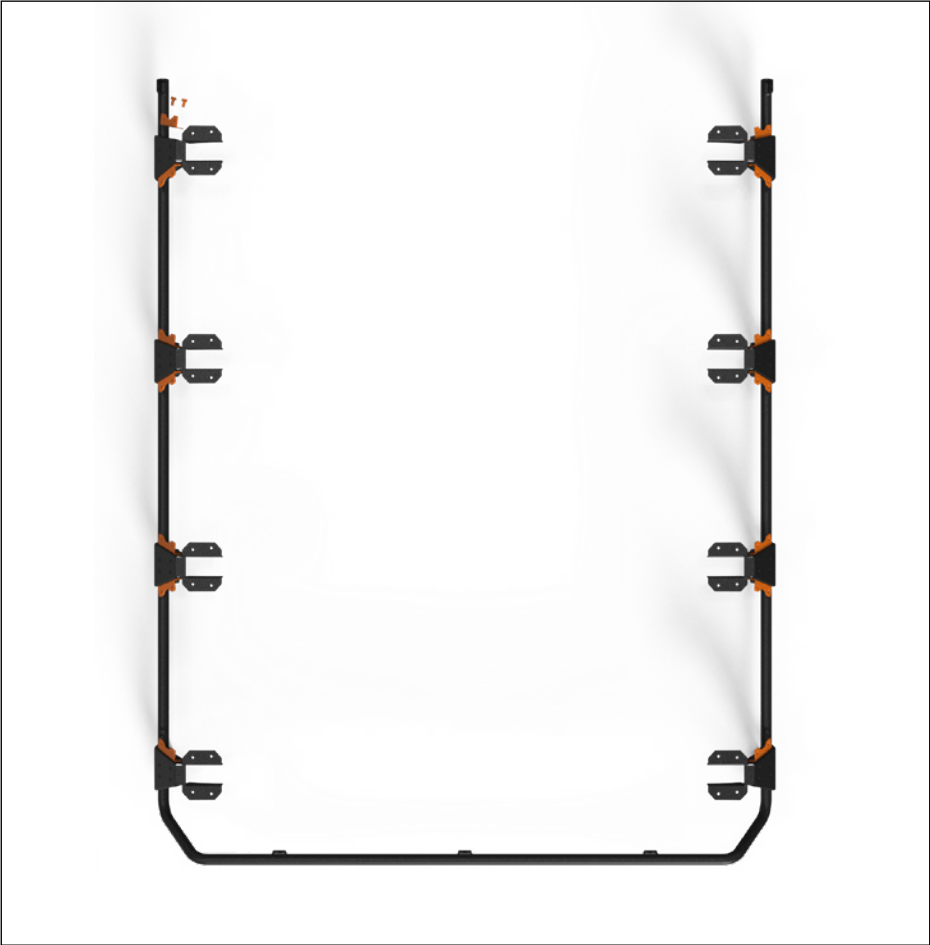


2. INSTALLATION



Mounting bracket side panel (14x)	Fasten the mounting bracket of the side panels. Do not tighten the screws yet!
Flange bolt M8x16 (28x)	

2. INSTALLATION

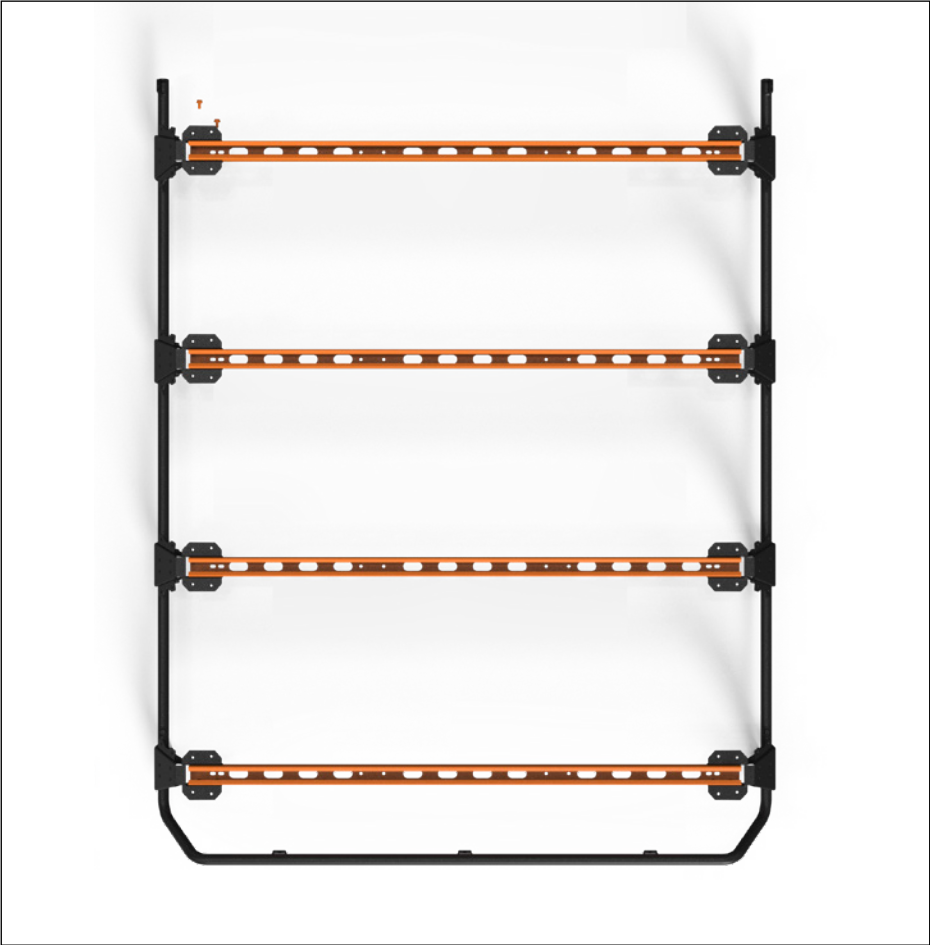


2. INSTALLATION



Cross rail of base frame (4x)	Mount the cross rail of base frame. The cross rails are fastened on both sides with four screws each. Do not tighten the screws yet!
Flange bolt M8x16 (32x)	

2. INSTALLATION



2. INSTALLATION



Support end plate (4x)	Mount the end plate support. Do not tighten the screws yet! Only for installation without step plates. If these are also fitted, pages 13 and 14 can be skipped.
Pan head screw M8x16 (8x)	

2. INSTALLATION

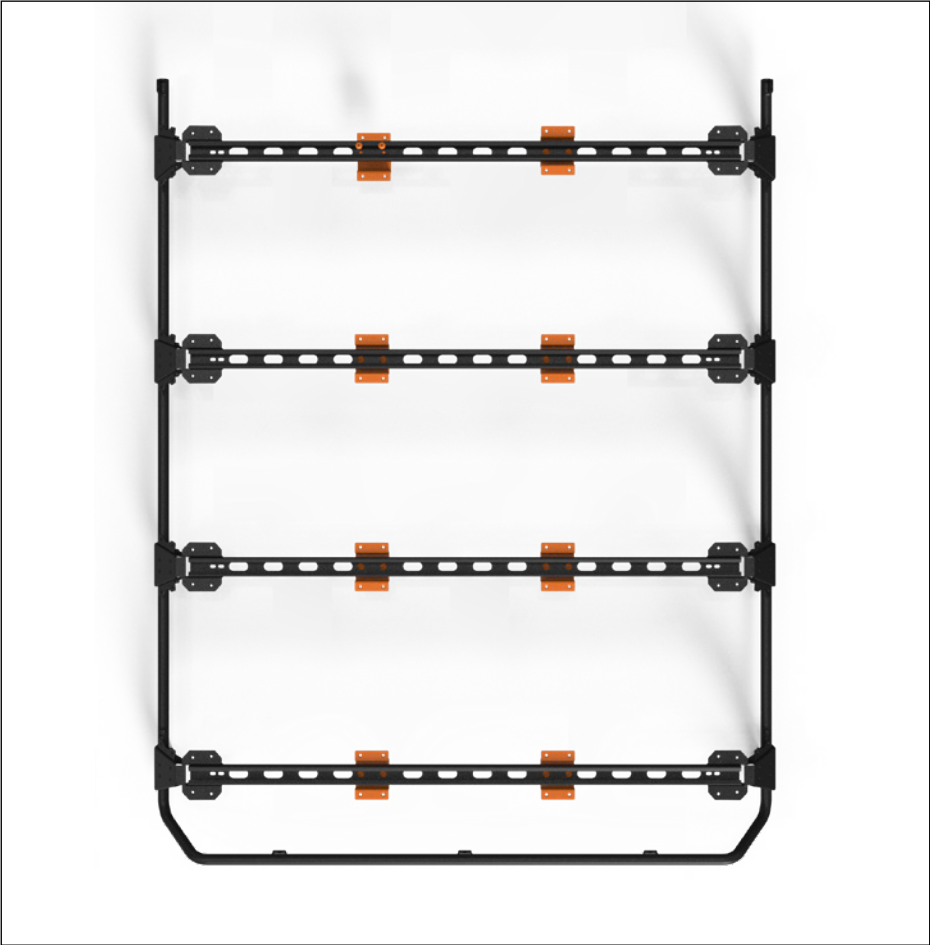


2. INSTALLATION



Mounting surface for center tread plate (8x)	Fit the mounting surface for center tread plate. Do not tighten the screws yet! Only included in the scope of delivery item no. 11079.
Pan head screw M8x16 (16x)	

2. INSTALLATION

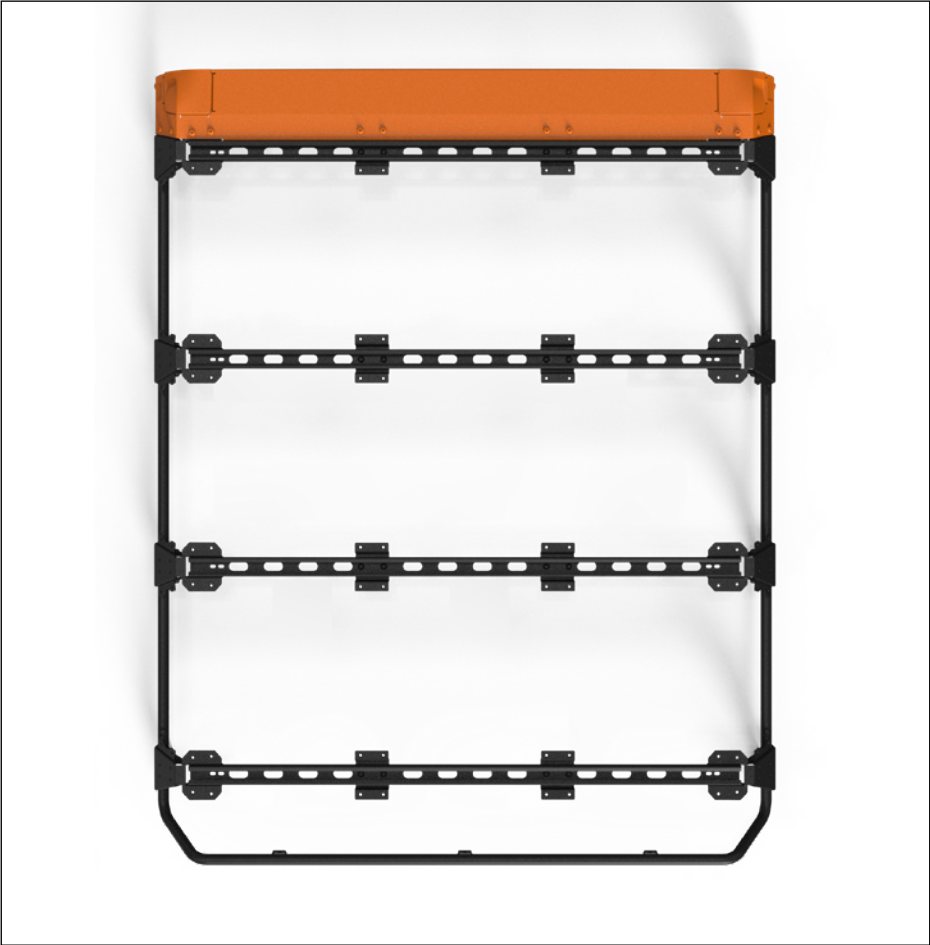


2. INSTALLATION

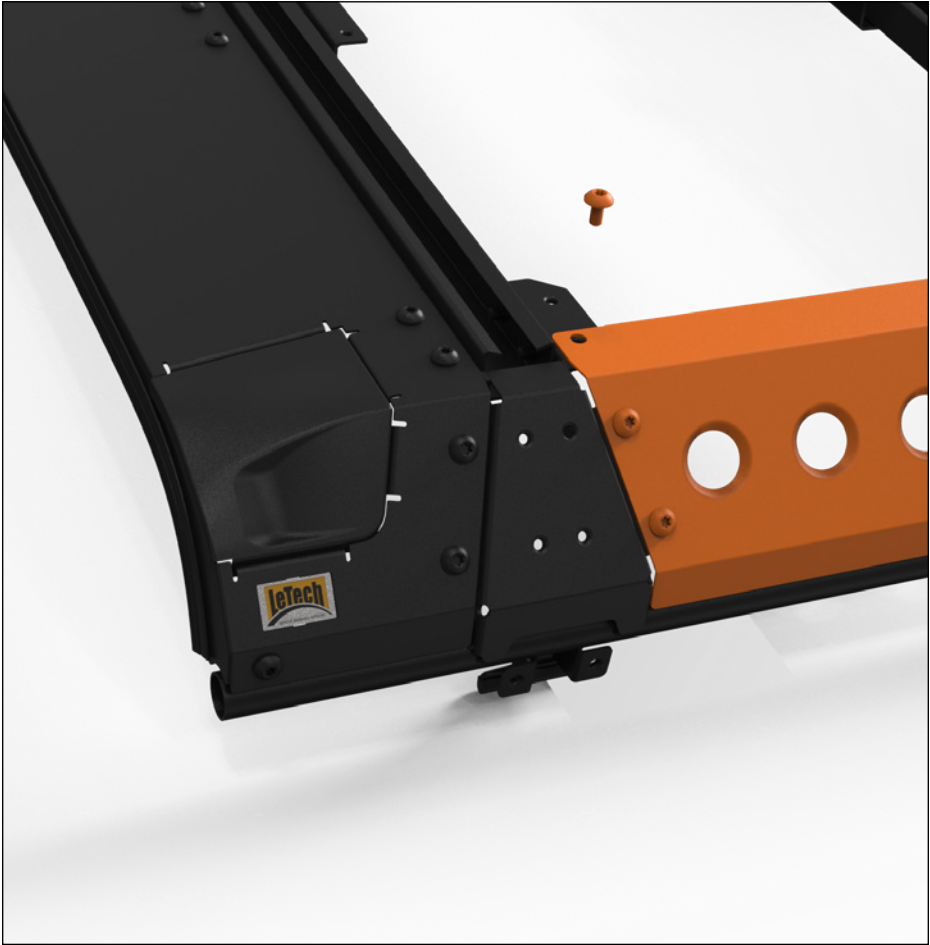


Windshield deflector (1x)	Mount the windshield deflector. Do not tighten the screws yet!
Pan head screw M8x16 (14x)	

2. INSTALLATION



2. INSTALLATION



Side panel (6x)	Fit the side panels. Do not tighten the screws yet!
Pan head screw M8x16 (24x)	

2. INSTALLATION



2. INSTALLATION



Rear end plate (1x)	Mount rear end plate. Do not tighten the screws yet!
Pan head screw M8x16 (6x)	


2. INSTALLATION



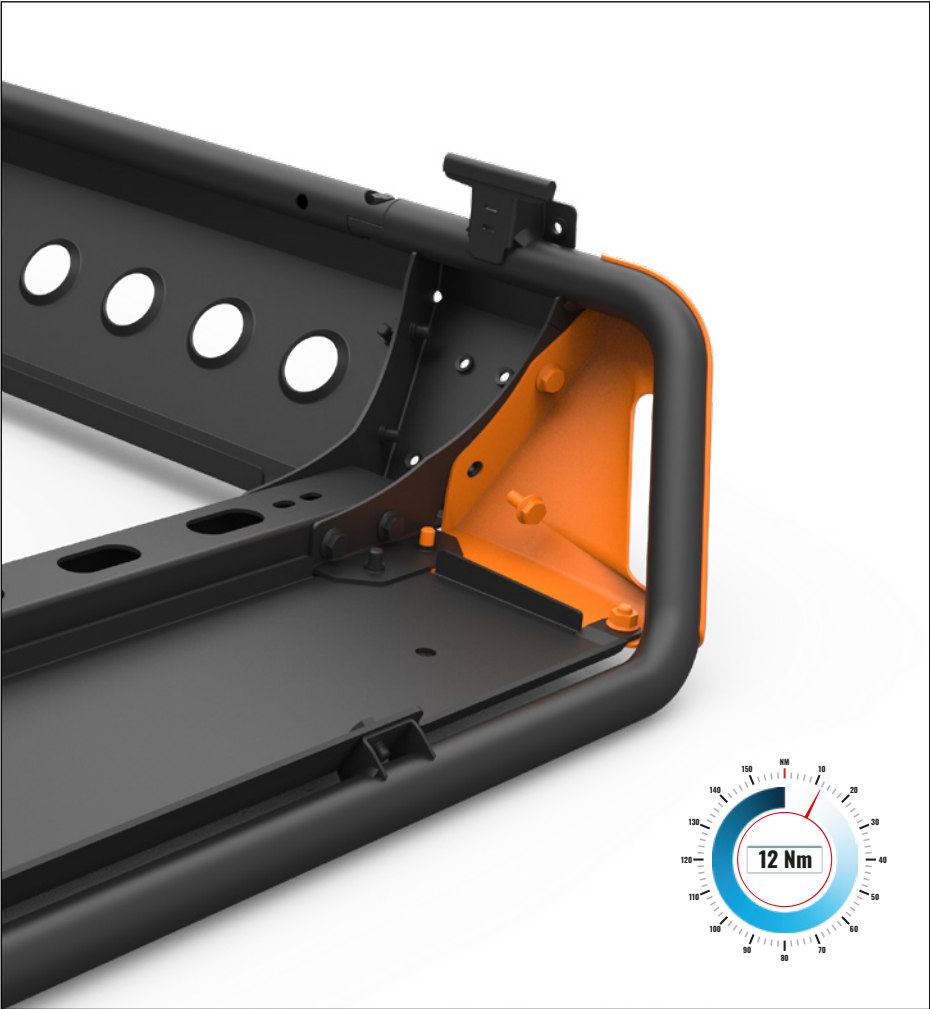
<p>Flange bolt M8x12 (3x)</p>	<p>Mount rear end plate. Do not tighten the screws yet!</p>
-----------------------------------	---

2. INSTALLATION



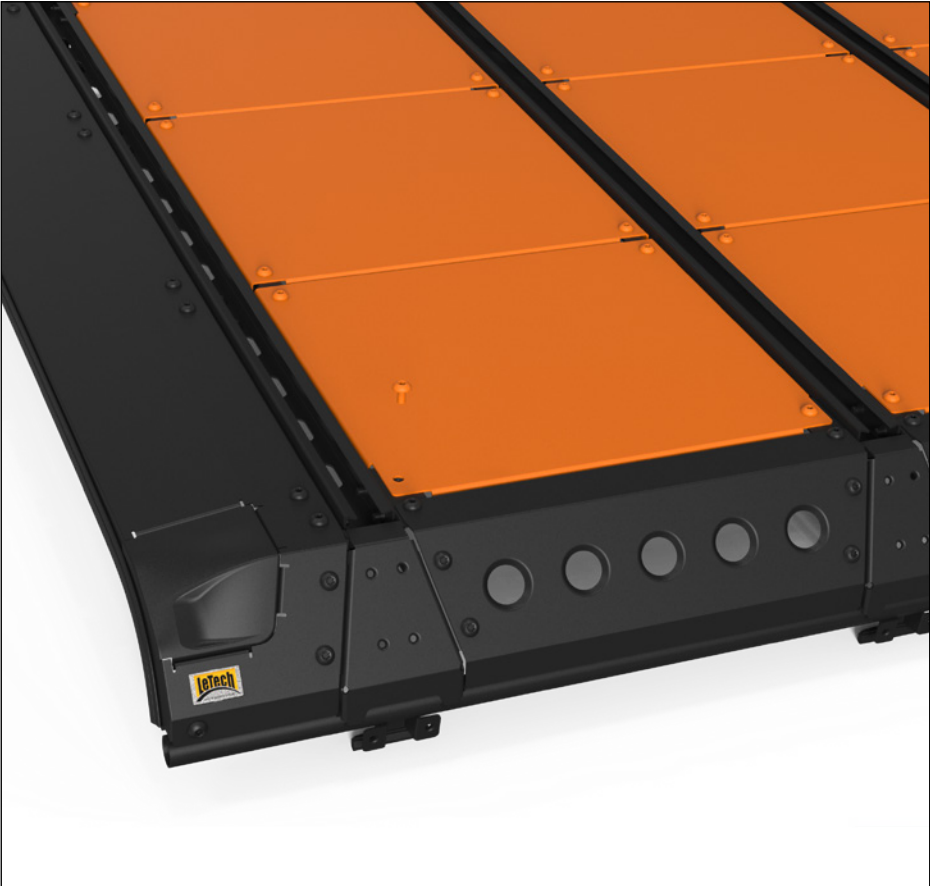
Side cover panel left (1x)	Mount side cover panel left and right. Tighten the screws to 12 Nm!	
Side cover panel right (1x)		
Pan head screw M8x16 (4x)		
Flange nut M8 (2x)		

2. INSTALLATION



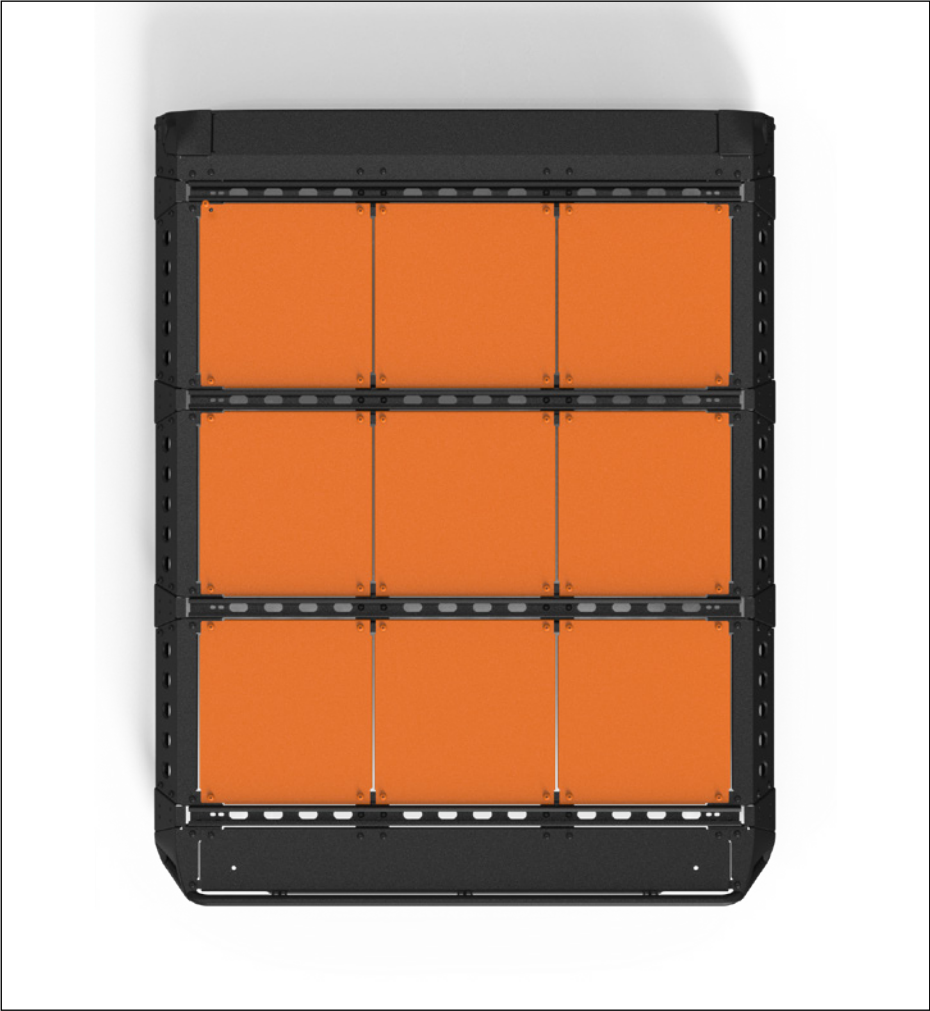
Flange bolt M8x16 (4x)	Mount side cover panel left and right. Tighten screws with 12 Nm!
---------------------------	---

2. INSTALLATION

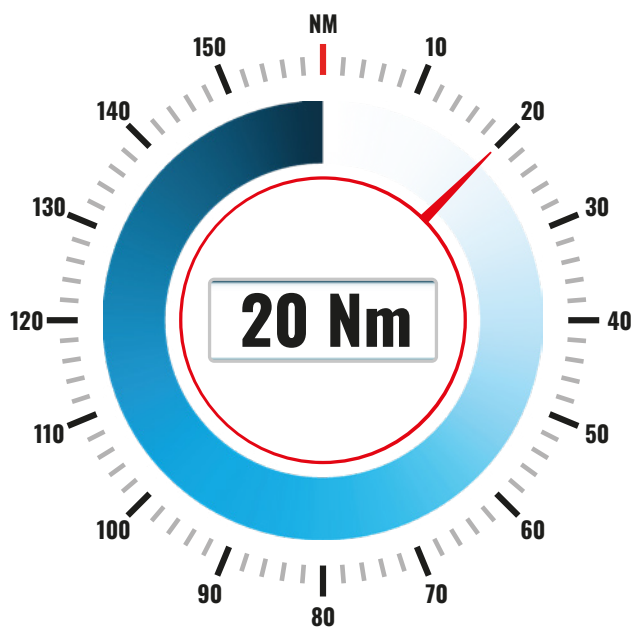


External tread plate (6x)	Mount the tread plates. Do not tighten the screws yet! Only included in the scope of delivery item no. 11079.
Center tread plate (3x)	
Pan head screw M8x16 (24x)	

2. INSTALLATION

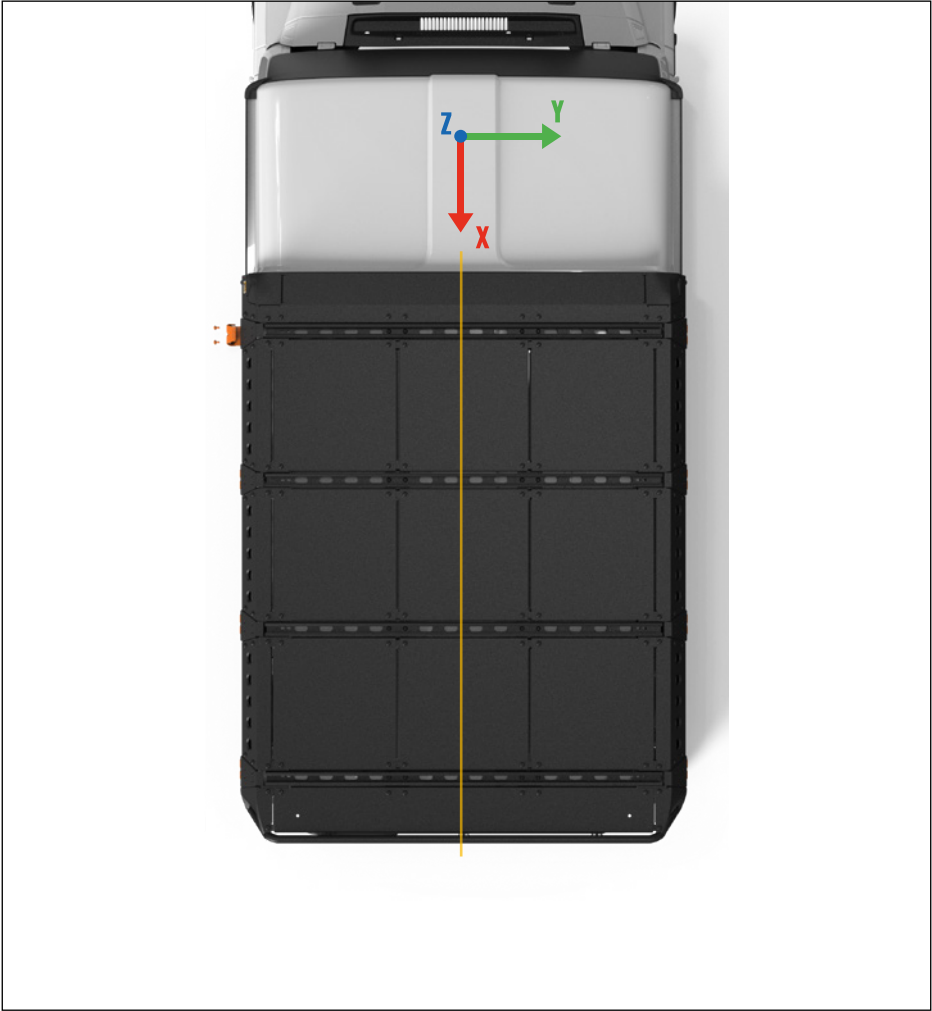


2. INSTALLATION



Torque wrench	Before the roof rack is mounted on the roof, all screws must be tightened to the prescribed torque of 20 Nm.
---------------	--

2. INSTALLATION



Place the LETECH roof rack on the roof so that the sealing lip at the front has about 5 mm clearance up to the roof phase.

2. INSTALLATION



Retaining clip (8x)	Attaching the roof rack to the grenadier.
Pan head screw M8x16 (16x)	

2. INSTALLATION



Closure plug (2x)	Fit the closure plugs on both sides.
----------------------	--------------------------------------