

LETECH SPARE WHEEL HOLDER FROM 2018

INSTALLATION INSTRUCTIONS

LAST UPDATE
2026

VEHICLE TYPE
G-CLASS FROM 2018

MADE IN GERMANY



LETECH

TABLE OF CONTENTS

1. General	3
1.1 Safety instructions	3
1.2 Scope of delivery	4
2. Assembly	5
2.1 Preparation spare wheel holder	5
2.2 Preparation Vehicle / Rear Console Mount	7
2.3 Final assembly spare wheel holder	9
2.4 Final projects	18

1. GENERAL

Thank you for purchasing a LETECH quality product. Through state-of-the-art production facilities, constant checks and regulated processes, we ensure that only flawless products leave our production.

1.1 SAFETY INSTRUCTIONS

Work on the vehicle may only be carried out by trained specialists.

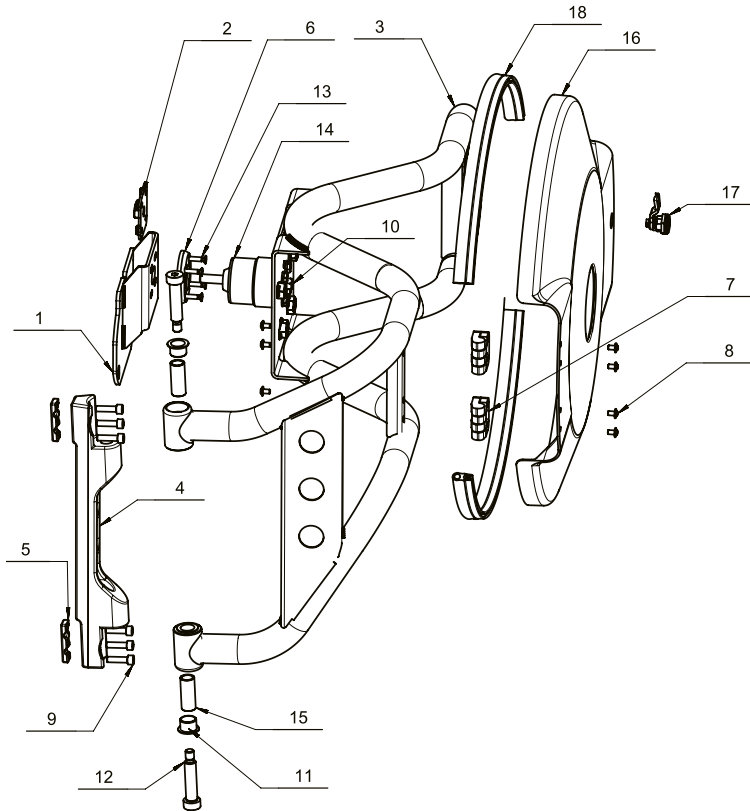
Work on the vehicle electrical system may only be carried out by specialists with appropriate electrical and electronic knowledge.

Before working on the vehicle electrical system, disconnect the battery.

Use suitable hoists and tools when preparing and assembling the LETECH spare wheel holder from 2018.

In general, the safety requirements of the respective workshop or country must be observed.

1.2 SCOPE OF DELIVERY



18	A4638893300_EDGE_PROTECTION_GEO	1
17	GANTER_GN_115-DK-10-SW_PROCESSED	1
16	PLASTIC_COVER_5HOLE_SMALL_BULGE	1
15	SLEEVE_PLAIN_BEARING_A_7001	2
14	CENTERING_5HOLE_RIM_A_7124	1
13	WUERTH_40246_40_COUNTERSUNK_TORX_SCREW_M6x30_STAINLESS_A2	4
12	FITTING_SCREW_7379-16-M12-60-NI	2
11	GFM_2023_16	4
10	HEX_BOLT_M12X120	1
9	SOCKET_HEAD_CAP_SCREW_M8x30_DIN912_ISO4762	6
8	PAN_FLANGE_HEAD_SCREW_M6x10_WUERTH_006000616	8
7	HINGE_GN158_70_50_M6	2
6	PLASTIC_MOUNT_5HOLE_RIM_A	1
5	HINGE_PLATE_MOUNT_A_7445	2
4	HINGE_MOUNT_463A_A_7444	1
3	PIPE_BRACKET_ASSEMBLY_463A_5HOLE_ASS2_7136	1
2	DOUBLE_PLATE_MOUNT_5HOLE_RIM_A_ASS2_7911	1
1	CONSOLE_REAR_DOOR_MOUNT_5HOLE_B_ASS2_7912	1

2. ASSEMBLY

2.1 PREPARATION SPARE WHEEL HOLDER



Unscrew the bolts

Note the hinge center piece at the top and bottom

Unpack the spare tire holder and partially disassemble it so that the center hinge section is separated and can be used as a template.

2. ASSEMBLY

2.1 PREPARATION SPARE WHEEL HOLDER



Remove the 2 x 3 M8 screws (including the rear threaded inserts) from the hinge center section.

2. ASSEMBLY

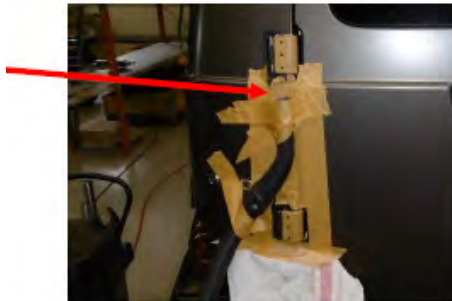
2.2 PREPARATION VEHICLE / REAR CONSOLE MOUNT



Remove the original spare tire and spare tire mount from the vehicle.
Clean the rear door.
Install the new rear door console onto the rear door. Use the original screws.

2. ASSEMBLY

2.2 PREPARATION VEHICLE / REAR CONSOLE MOUNT



Mask off the door hinges.
Protect the paint; set up a chip extraction system.

2. ASSEMBLY

2.3 FINAL ASSEMBLY SPARE WHEEL HOLDER



The radius must fit closely; note the top and bottom



marks on the door hinge

Place the hinge center piece against the door hinges until the radius touches the door hinge; pay attention to the top and bottom! Mark the drill holes.

2. ASSEMBLY

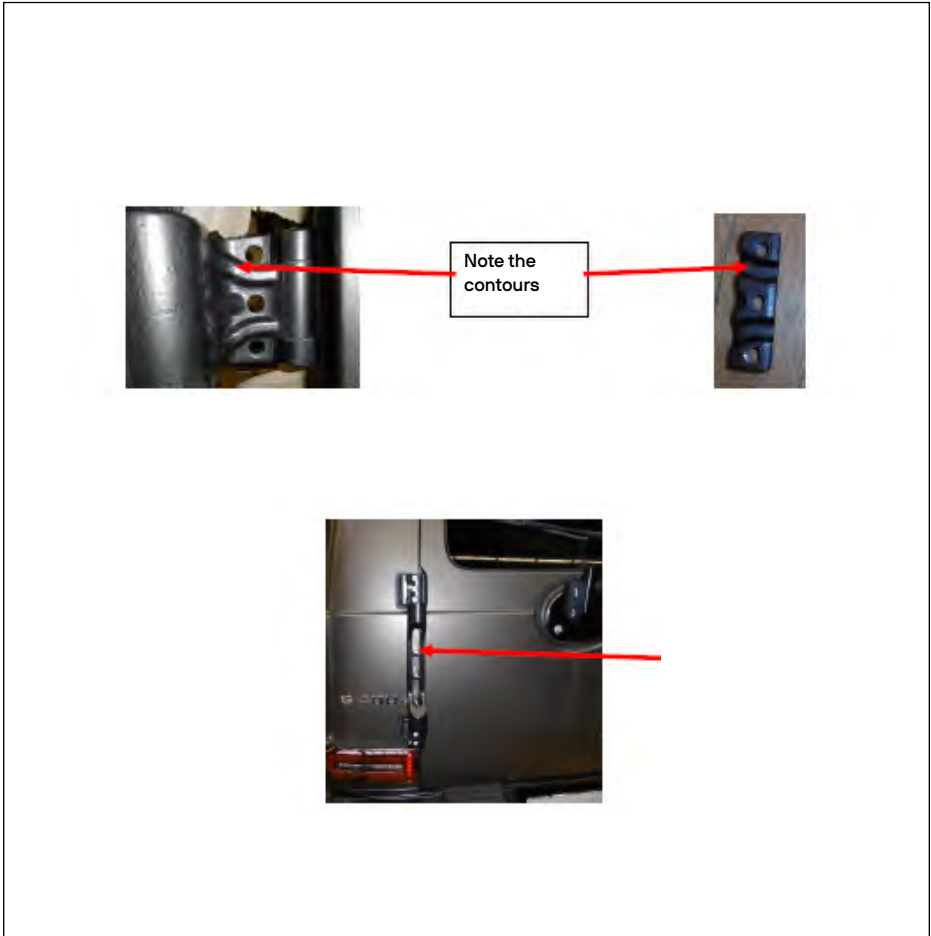
2.3 FINAL ASSEMBLY SPARE WHEEL HOLDER



Drill 9 mm holes; center and pre-drill first.
Place a sheet of metal underneath to prevent the drill bit from damaging the paint.
Apply corrosion protection (paint).

2. ASSEMBLY

2.3 FINAL ASSEMBLY SPARE WHEEL HOLDER



Screw the hinge center piece to the door hinges (M8 screws). Take care to follow the outline of the threaded plates.

2. ASSEMBLY

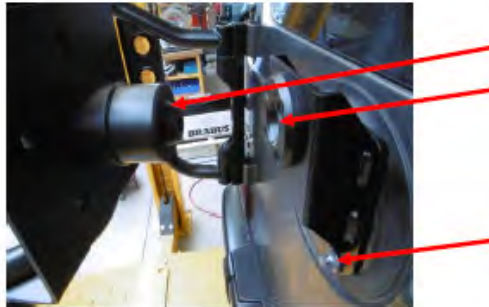
2.3 FINAL ASSEMBLY SPARE WHEEL HOLDER



Install the pipe clamp; grease the pivot point and bushing.

2. ASSEMBLY

2.3 FINAL ASSEMBLY SPARE WHEEL HOLDER



Align the bracket to the tailgate using the slotted holes so that the bracket's cone aligns with the cone on the tubular bracket; readjust if necessary once the electric bike is mounted.

2. ASSEMBLY

2.3 FINAL ASSEMBLY SPARE WHEEL HOLDER



Install the wheel cover using M6 x 10 screws on both sides.

2. ASSEMBLY

2.3 FINAL ASSEMBLY SPARE WHEEL HOLDER



Install the lock on the wheel cover, with the latch facing downward.

2. ASSEMBLY

2.3 FINAL ASSEMBLY SPARE WHEEL HOLDER



Install the spare tire.

2. ASSEMBLY

2.3 FINAL ASSEMBLY SPARE WHEEL HOLDER



After installing the spare wheel, check the alignment of the cones between the pipe bracket and the console again and readjust them using the slotted holes if necessary.

2.4 FINAL PROJECTS

- Install all cover caps.
- Clean everything.
- Check the screws.
- Take a test drive.

Caution:

Open the tube bracket carefully! There is a risk of collision between the tube bracket and the hinge center piece! This may damage the surface coating!

