

# INSTALLATION INSTRUCTIONS

Product

**LeTech  
winch attachment**

Vehicle type

**Grenadier**

Last update

**25/01/2024**



**LeTech GmbH & Co. KG**

[info@lennartz-technik.de](mailto:info@lennartz-technik.de)

[www.lennartz-technik.de](http://www.lennartz-technik.de)

**1    TABLE OF CONTENTS**

**1    Table of contents. . . . . 2**

**2    General . . . . . 3**

    2.1    Safety instructions . . . . . 3

    2.2    Scope of delivery . . . . . 4

**3    Assembly . . . . . 6**

    3.1    Installation of the LeTech winch attachment . . . . . 6

## 2 GENERAL

Thank you for purchasing a LeTech quality product. Through state-of-the-art production facilities, constant checks and regulated processes, we ensure that only flawless products leave our production.

### 2.1 SAFETY INSTRUCTIONS

Work on the vehicle may only be carried out by trained specialists.

Work on the vehicle electrical system may only be carried out by specialists with appropriate electrical and electronic knowledge.

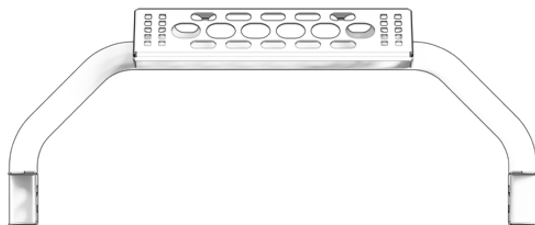
Before working on the vehicle electrical system, disconnect the battery.

Use a suitable tool when preparing to install the LeTech winch attachment.

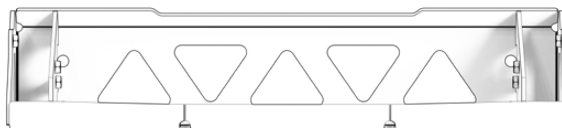
In general, the safety requirements of the respective workshop or country must be observed.

## 2.2 SCOPE OF DELIVERY

Cross tube  
(1x)



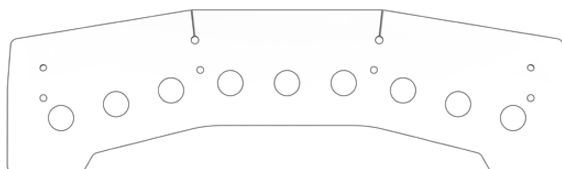
Base support  
(1x)



Cover  
(1x)



Guard plate  
(1x)



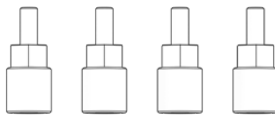
## 2.2 SCOPE OF DELIVERY



Screw M8x16  
(6x)



Screw M10x35  
(4x)



Spacer nut  
(4x)



Flange nut M12x1.5  
(4x)



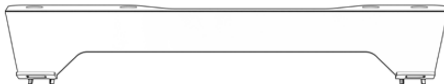
Screw M10x20  
(10x)



Screw M8x20  
(4x)



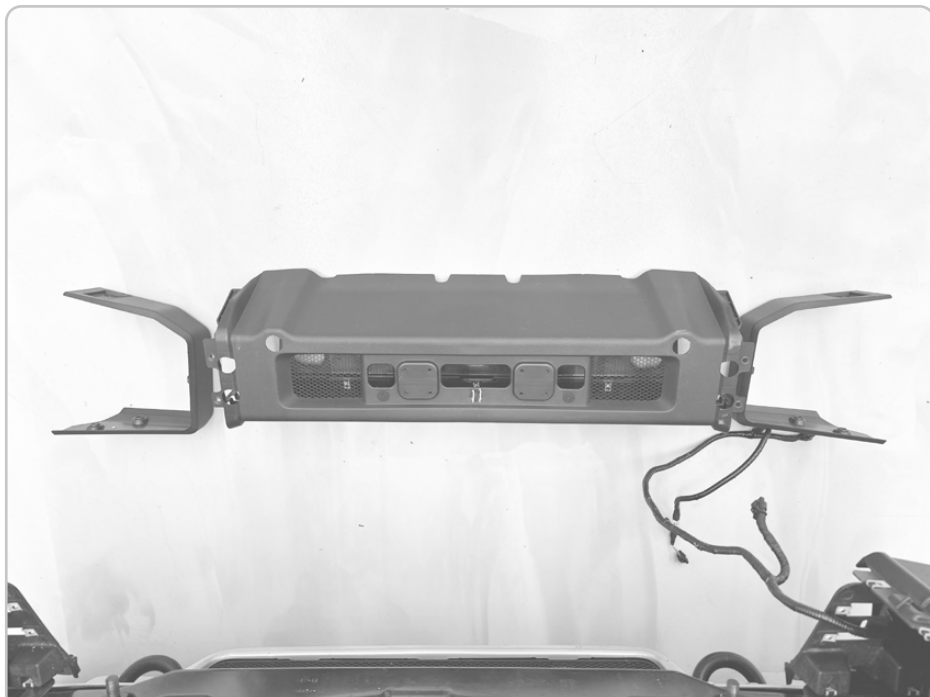
Console mudguard left  
(1x)  
Console mudguard right  
(1x)



Console mudguard  
(1x)

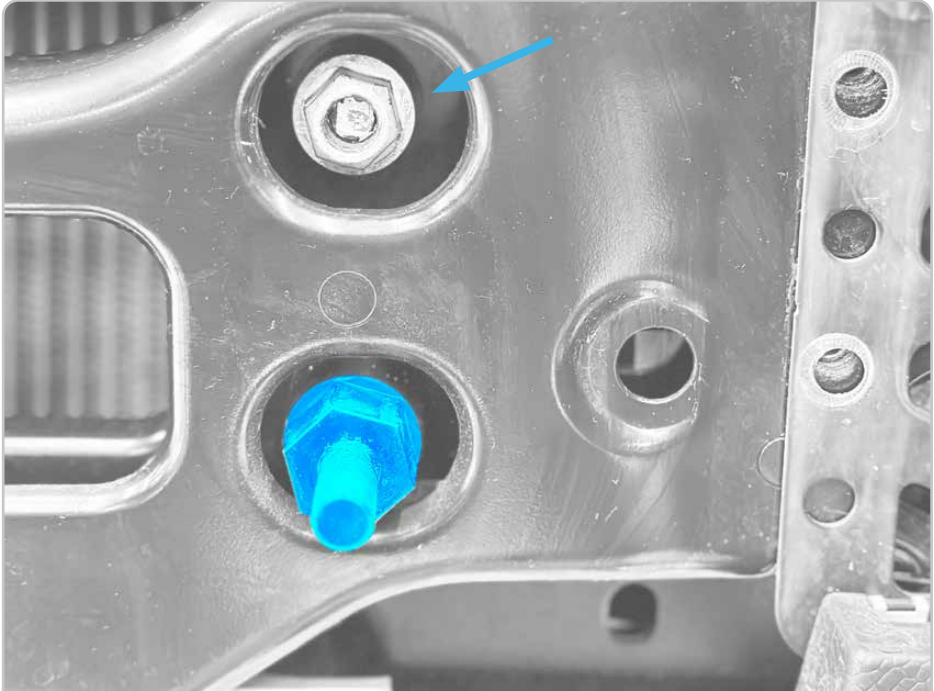
## **3 ASSEMBLY**

### **3.1 INSTALLATION OF THE LETECH WINCH ATTACHMENT**

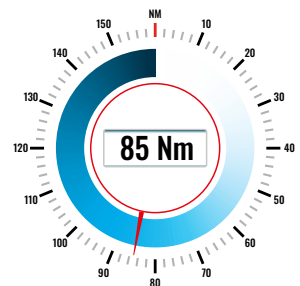


Remove the center piece  
of the original bumper  
and unplug the cables.

### 3.1 INSTALLATION OF THE LETECH WINCH ATTACHMENT



Replace the original nuts with the threaded nuts included in the delivery and tighten to 85Nm.

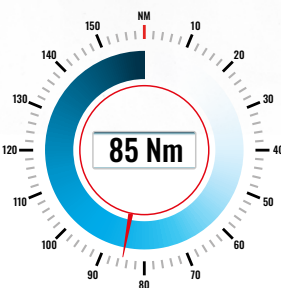


### 3.1 INSTALLATION OF THE LETECH WINCH ATTACHMENT



Base support  
(1x)  
Flange nut M12x1.5  
(4x)

The base support is fastened with the four flange nuts M12x1.5 and tightened with 85Nm each.



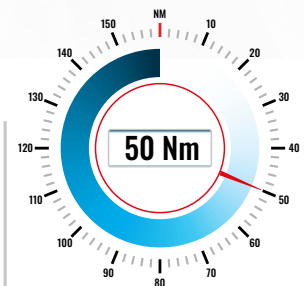


### 3.1 INSTALLATION OF THE LETECH WINCH ATTACHMENT



Cross tube  
(1x)  
Screw M10x35  
(4x)

Fasten the cable winch with the four M10x35 (50Nm) and position the cross tube included in the delivery in the position shown.

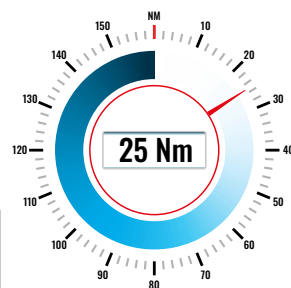


## 3.1 INSTALLATION OF THE LETECH WINCH ATTACHMENT



Screw M10x20  
(4x)

Fasten with the four  
M10x20 screws and  
tighten to 25Nm.



### 3.1 INSTALLATION OF THE LETECH WINCH ATTACHMENT



Cover  
(1x)

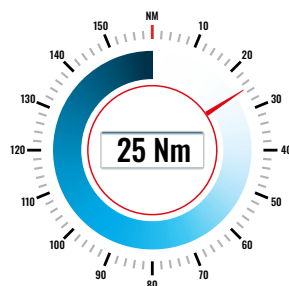
Retract the screen into the position shown and previously thread the cable into the respective cable winch windows.

## 3.1 INSTALLATION OF THE LETECH WINCH ATTACHMENT



Screw M10x20  
**(4x)**

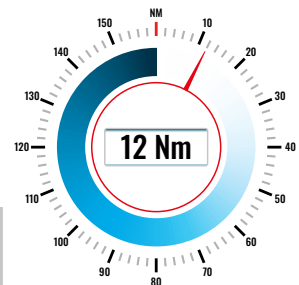
Fasten the cover with  
four M10x20 screws and  
tighten to 25Nm.



### 3.1 INSTALLATION OF THE LETECH WINCH ATTACHMENT



Then reattach the side panels with original screws (12Nm).



# LeTech winch attachment



# LeTech winch attachment



MADE IN GERMANY



## LeTech winch attachment



### **LeTech GmbH & Co. KG**

Reizenwiesen 19

73642 Welzheim

Phone: +49 7182 93565 - 0

[info@lennartz-technik.de](mailto:info@lennartz-technik.de)

[www.lennartz-technik.de](http://www.lennartz-technik.de)